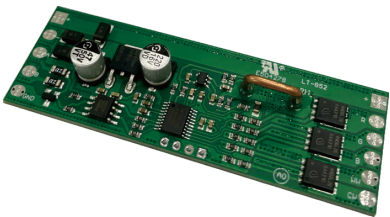


5 Channel DMX/RDM Decoder (CV)

- Standard DMX /RDM interface allows for flexible parameter setup;
- Ultra-small size meets diverse application demands;
- Smooth dimming curve, flicker-free dimming;
- Bare board design for easy integration into various lamps;
- DIM/CT/RGB/RGBW/RGBCW LED lamps are controllable;
- 5-channel output interface;
- Over-temperature, anti-reverse protection and self recovery.



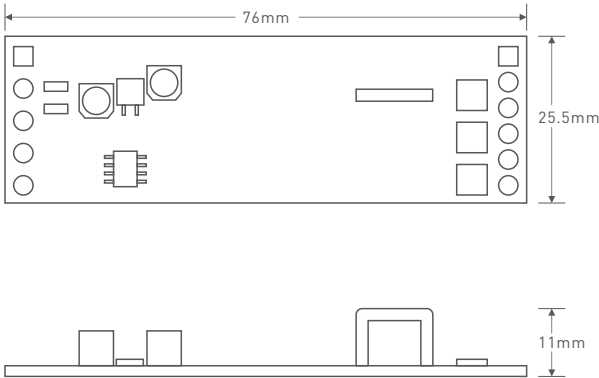
Product Parameters

Input Signal	DMX512, RDM
Input Voltage	5-24V $\overline{=}$
Output Type	Constant Voltage
Output Current	2A×5CH Max. 10A
Output Voltage	5×(5-24V $\overline{=}$ )
Output Power	50W@5V 120W@12V 240W@24V

Dimming Range	0-100%
Working Temp.	-25°C-50°C
Input & Output interface	Pad hole
Dimensions	L76×W25.5×H11mm
Weight	11g±3g
Protection	Over-temperature, anti-reverse protection and self recovery.

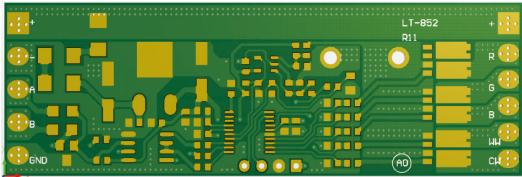
Product Size

Unit: mm

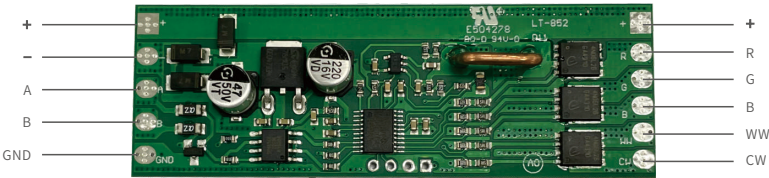


Terminal description

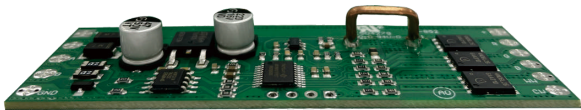
PCB board



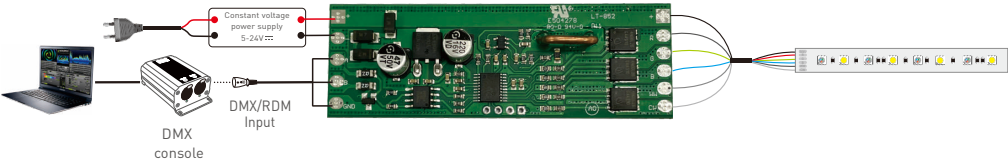
Main view



Side view



Wiring Diagram



## Attentions

- Product installation and commissioning should be done by a qualified professional.
  - LTECH products are and not lightningproof non-waterproof (special models excepted). Please avoid the sun and rain. When installed outdoors, please ensure they are mounted in a water proof enclosure or in an area equipped with lightning protection devices.
  - Good heat dissipation will extend the life the product. Please install the product in a environment with good ventilation.
  - When you install this product, please avoid being near a large area of metal objects or stacking them to prevent signal interference.
  - Please keep the product away from a intense magnetic field, a high pressure area or a place where lightning is easy to occur.
  - Please check whether the working voltage used complies with the parameter requirements of the product.
  - Before you power on the product, please make sure all the wiring is correct in case of incorrect connection that may cause a short circuit and damage the components, or trigger a accident.
  - If a fault occurs, please do not attempt to fix the product by yourself. If you have any question, please contact the supplier.
- \* This manual is subject to changes without further notice. Product functions depend on the goods. Please feel free to contact our official distributors if you have any question.

## Warranty Agreement

Warranty periods from the date of delivery : 5 years.

Free repair or replacement services for quality problems are provided within warranty periods.

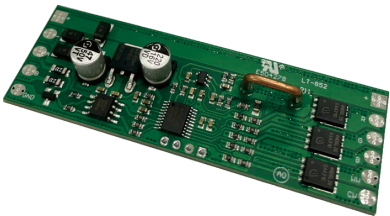
Warranty exclusions below:

Following conditions are not within the guarantee range of free repairing or replacement services:

- Beyond warranty periods.
  - Any artificial damage caused by high voltage, overload, or improper operations.
  - Products with severe physical damage.
  - Damage caused by natural disasters and force majeure.
  - Warranty labels and barcodes have been damaged.
  - No any contract signed by LTECH.
1. Repair or replacement provided is the only remedy for customers. LTECH is not liable for any incidental or consequential damage unless it is within the law.
  2. LTECH has the right to amend or adjust the terms of this warranty, and release in written form shall prevail.

5通道DMX/RDM恒压解码器

- 标准的DMX/RDM接口，可自由设置参数；
- 超小尺寸，满足多种应用需求；
- 调光曲线平滑、无闪烁；
- 裸板设计，易于嵌入各种灯具内；
- 可控制DIM/CT /RGB /RGBW/RGBCW的LED灯具；
- 具有5通道输出接口。
- 过温、防反接保护，可自行恢复；



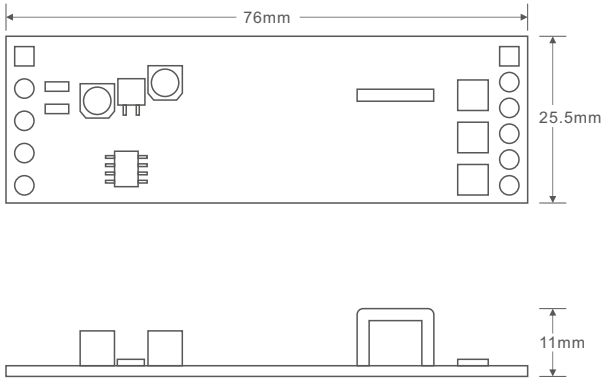
技术参数

输入信号	DMX512, RDM
输入电压	5-24V $\overline{\text{DC}}$
输出类型	恒压
输出电流	2A $\times$ 5CH Max. 10A
输出电压	5 $\times$ (5-24V $\overline{\text{DC}}$ )
输出功率	50W@5V 120W@12V 240W@24V

调光范围	0-100%
工作温度	-25 $^{\circ}$ C-50 $^{\circ}$ C
输入输出接口	焊盘孔
产品尺寸	L76 $\times$ W25.5 $\times$ H11mm
重量	11g $\pm$ 3g
保护	过温、防反接保护，可自行恢复

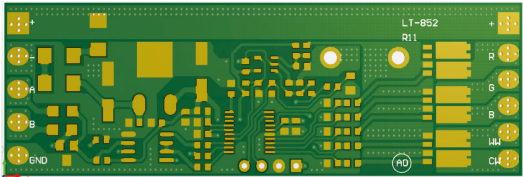
产品尺寸

单位：mm

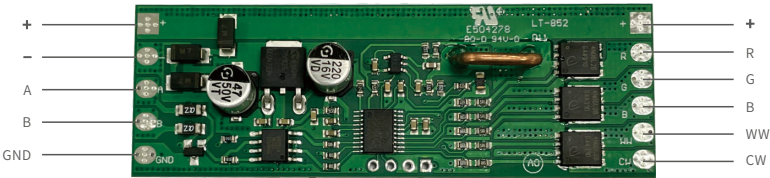


端子描述

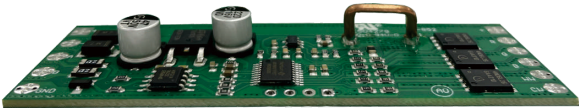
PCB板



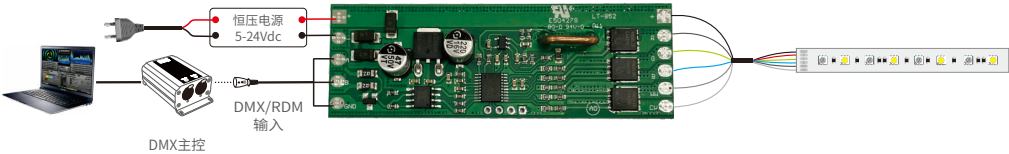
主视图



侧视图



连接示意图



## 注意事项

- 本产品请由具有专业资格的人员进行调试安装；
- 雷特产品（专有型号除外）不能防水防雷，需避免日晒雨淋，如安装在户外，请用防水箱和防雷装置；
- 良好的散热条件会延长产品的使用寿命，请把产品安装在通风良好的环境；
- 安装时，避免靠近大面积金属物体，或堆叠摆放，以免信号干扰影响使用；
- 避免安装在雷区、强磁场和高压区域；
- 请检查使用的工作电压是否符合产品的参数要求；
- 通电调试前，确保所有接线正确且牢固，以免短路损坏部件，触发事故；
- 如果发生故障，请勿私自维修；如有疑问，请联系供应商。

\* 本说明书的内容如有变更，恕不另行通知。若内容与您使用的功能有所不同，则以实物为准。如有疑问，请与供应商联系。

## 保修协议

- 自出厂之日起保修服务期为5年。
- 在保修服务期内出现产品质量问题雷特将给予免费修理或更换服务。

非保修条例：

属下列情况不在免费保修或更换服务范围之内：

- 已经超出保修服务期；
- 过高压、超负载、操作不当等人为造成的损坏；
- 产品外形严重损坏或变形；
- 自然灾害以及人力不可抗拒原因造成的损坏；
- 产品保修标签和产品唯一条形码损坏；
- 无雷特签订的合同或发票凭证。

1. 修理或更换是雷特对客户的一补救措施。雷特不承担任何附带引起的损害赔偿，除非在适用法律范围之内。
2. 雷特享有修正或调整本保修条款的权利，并以书面形式发布为准。