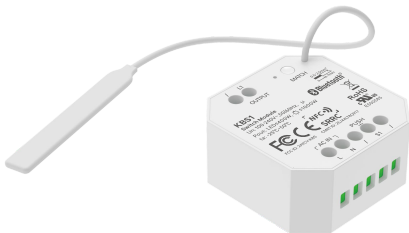


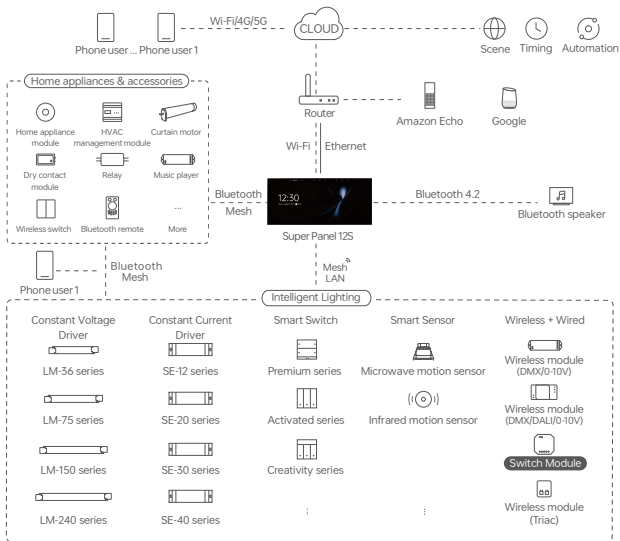
# Switch Module

Model: KBS1



Manual

# System Diagram



# Product Introduction

- Bluetooth 5.2 SIG Mesh communication protocol, offering strong networking capabilities, reliability, and stability.
- Supports both mechanical and reset switches, enabling app control even when manually turned off to meet diverse needs; supports power-on or power-off scenarios for hotel-style applications.
- Supports power-on or power-off scenarios to accommodate hotel-style usage scenarios;
- Supports OTA (Over-the-Air) online upgrades, ensuring timely feature updates and usage safety, keeping the product up-to-date.
- Supports direct connection of mobile phones to devices, enabling direct control of devices through the L-Home app;
- Supports gateway-free control, enabling LAN remote control, wireless panels, group control, and more.
- Supports integration with a smart gateway to enable remote control of home devices, making life more convenient.
- Compact size, allowing easy installation in European, American, and national standard junction boxes, suitable for various installation scenarios.
- Supports power-off reset functionality and mechanical key reset functionality.

## Technical Specs

Model	KBS1
Wireless type	Bluetooth 5.2 SIG Mesh
Switch channel	1CH
Operating voltage	100-240V~, 50/60Hz, $\mu$
Max. load parameters of the relay	Resistive load: 1000W@230Vac, 500W@110Vac Capacitive load: 400W@230Vac, 200W@110Vac
Relay surge current	70A@10ms
Working temperature	-25°C~50°C
Product size	L45×W45.5×H20.5(mm)
Product weight	30g
Standards	UL 8750、EN 61347-2-13:2014+A1:2017、EN 61347-1:2015+A1:2021、EN 62493:2015/A1:2022



Bluetooth®

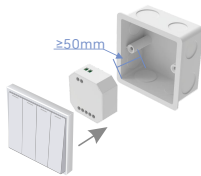
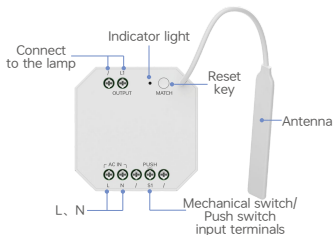


RoHS

SRRC



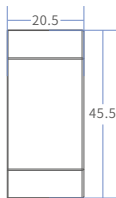
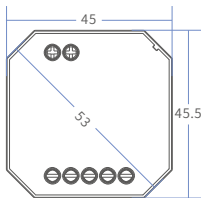
# Product Images



Hide this product inside a junction box.  
\*Requires installation in a box with a depth of  $\geq 50\text{mm}$

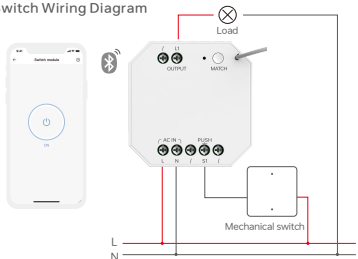
## Product Size

Unit: mm

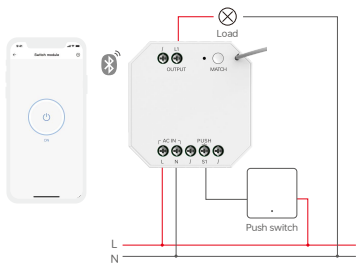


# Wiring Diagram

## 1. Mechanical Switch Wiring Diagram

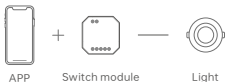


## 2. Push Switch Wiring Diagram

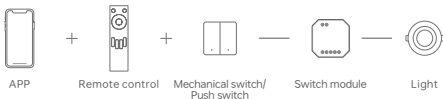


# Recommended Applications

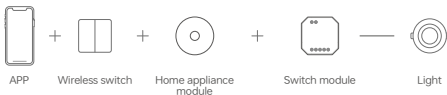
## 1. Wireless light control



## 2. After setting up the remote control association with the switch module via the APP, both the APP and the remote control can be used to control the device.



## 3. Supports local scenes, gateway-free operation, and controllable even when offline.



## 4. Work with intelligent gateway, it can realize visual control, cloud scene and automatic linkage.



## 5. ...Intelligent control. Set up more app configs as you like.

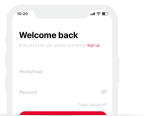
# App Operating Instructions

## 1. Register an account

Scan the QR code below with you mobile phone and follow the prompts to complete the app installation.

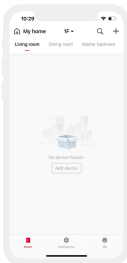


Scan code download APP  
IOS/Android



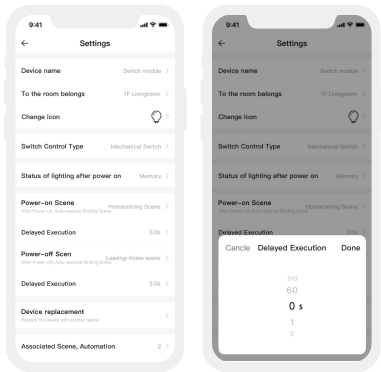
## 2. Pairing operation

After creating a new home in the APP, click the "+" in the upper right corner on the **【Room】** interface to add devices. Select "Smart Module" from the device list and follow the on-screen instructions to complete the addition.



### 3. Power On/Off Scene Settings

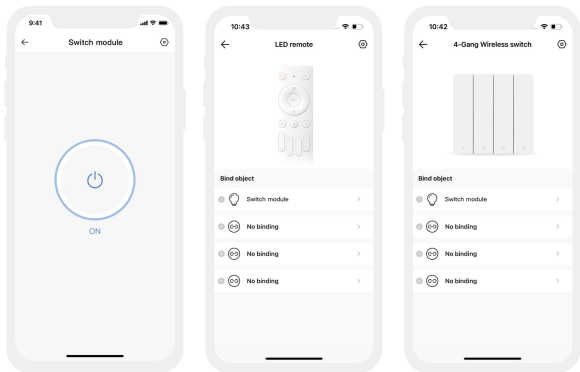
On the settings page, you can configure the scenes to be executed when the device powers on or off, along with the execution times for these scenes.





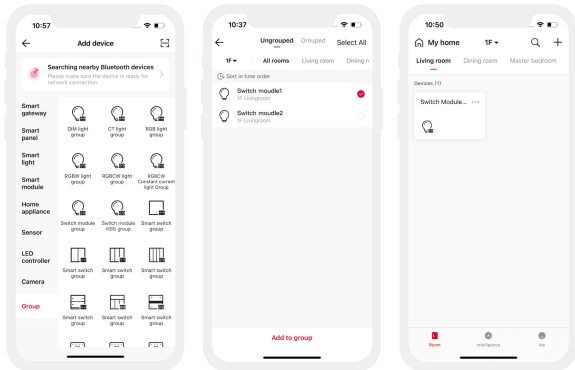
## 4. Binding Interface Settings

After pairing is complete, enter the Smart Remote/Smart Wireless Switch binding interface. Select the switch module device to associate it. You can then control the device's power state via the Smart Remote/Smart Wireless Switch. You may also unbind the device from this interface.



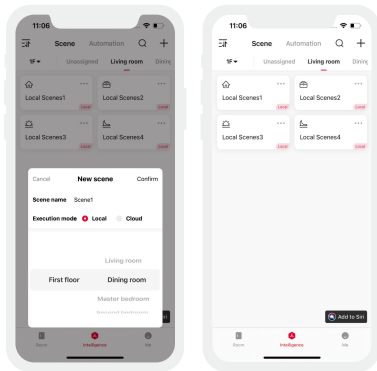
## 5. Group Control

Supports grouping identical switch modules or single switches from dual-channel relays (KBS) into clusters. Users can conveniently control power on/off operations for the entire group. To add a device, navigate to the device list, select "Group - Switch Module Group," modify the group name as prompted, click "Next," check the devices to include in the group, then save.



## 6. Local scene

Switch to the **【Smart】** page, click "+" in the upper right corner to create a local scene, and after setting the execution action, you can realize the local linkage of Bluetooth devices.

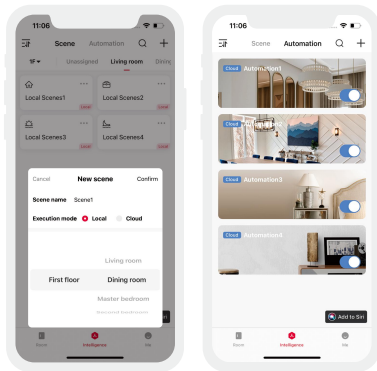


## 7. Cloud scenes and automation

Make sure that a smart gateway, such as SP-GW-6S, has been added to the family.

**Cloud scenes:** Switch to the **【Smart】** interface and click "+" to create a cloud scene. After setting the execution action, remote linkage can be achieved.

**Automation:** Select "Automation" in the **【Smart】** page and click "+" to create automation. You can choose local/cloud execution mode, and set trigger conditions and execution actions. When the set trigger conditions are met, a series of device actions are automatically triggered to achieve remote linkage

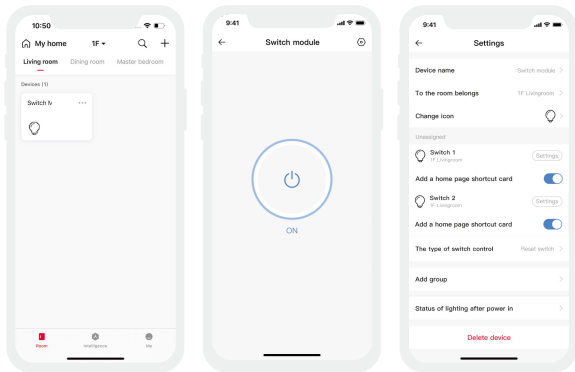


## 8. Reset to factory defaults

**Mechanical Reset:** Connect device to lighting fixture. Hold reset button for 15s until indicator light flashes red rapidly, then release. Press reset button 3 times briefly within 3s. Slow red flash means factory settings restored; rapid blue flash means setup is complete.

**Power Cycle Reset:** With the power disconnected, use the switch to power on the device for 15 seconds, then power off for 2 seconds. Repeat this power cycle six times (each cycle: 2 seconds on, 5 seconds off). After the seventh power-on cycle, the load lamp will flash three times, indicating a successful reset to factory settings.

**APP Reset:** Click the "..." on the switch module to enter the main interface, then click the "⊙" in the upper right corner to access the settings interface. Click "Delete Device" to complete the reset.



# FAQ

## What should I do if the device cannot be found during the search?

Please check the following options:

- Ensure the device is powered on and functioning properly.
- Ensure the phone and the device are as close as possible, preferably within 15 meters.
- Ensure the device has not been added before. If it has, please manually restore it to factory settings.

## Attention

- Product installation and commissioning should be done by a qualified professional.
- Our company products are and not lightningproof non-waterproof(special models excepted). Please avoid the sun and rain. When installed outdoors, please ensure they are mounted in a water proof enclosure or in an area equipped with lightning protection devices
- Good heat dissipation will prolong the working life of products. Please ensure good ventilation.
- Please check if the working voltage used complies with the parameter requirements of products.
- The diameter of wire used must be able to load the light fixtures you connect and ensure the firm wiring.
- Before you power on products, please make sure all the wiring is correct in case of incorrect connection that causes damage to light fixtures.
- If a fault occurs, please do not attempt to fix products by yourself. If you have any question, please contact your suppliers.

# Warranty Agreement

- Warranty periods from the date of delivery: 5 years.
- Free repair or replacement services for quality problems are provided within warranty periods.

Warranty exclusions below:

Following conditions are not within the guarantee range of free repairing or replacement services:

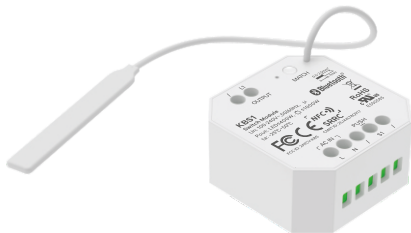
- Beyond warranty periods.
- Any artificial damage caused by high voltage, overload, or improper operations.
- Products with severe physical damage.
- Damage caused by natural disasters and force majeure.
- Warranty labels and barcodes have been damaged.
- No any contract signed by our company.

1. Repair or replacement provided is the only remedy for customers. Our company is not liable for any incidental or consequential damage unless it is within the law.
2. Our company has the right to amend or adjust the terms of this warranty, and release in written form shall prevail.

\* This manual is subject to changes without further notice. Product functions depend on the goods. Please feel free to contact our official distributors if you have any question.

# 蓝牙单路继电器

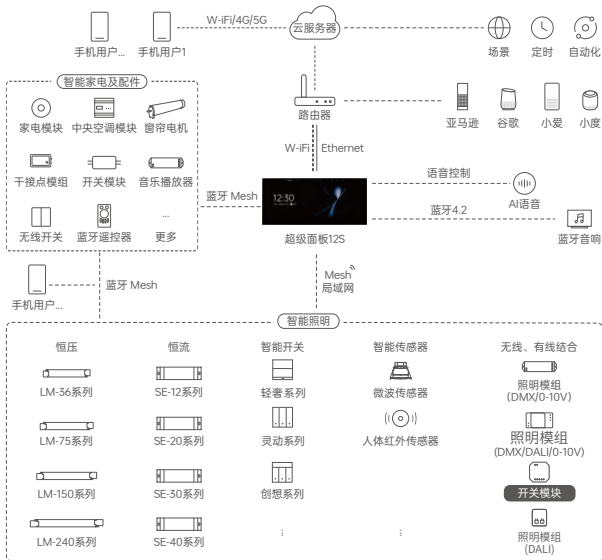
型号: KBS1



使用说明书



# 系统图



# 产品介绍

- Bluetooth 5.2 SIG Mesh通信协议，组网能力强，可靠稳定；
- 支持机械式和复位式两种开关，即使手动关灯，APP也能控制，满足多样化需求；
- 支持设置通电或断电场景，满足酒店式使用场景；
- 设备支持OTA在线升级，确保功能及时更新，让产品常用常新；
- 支持手机直接连接设备，能够通过L-Home APP实现对设备的直接操控；
- 支持无网关控制，可实现局域网遥控，无线面板，群组等控制；
- 支持搭配智能网关实现远程控制家中设备，使生活更便捷；
- 体积小巧，可轻松安装在欧规、美规和国标底盒内，适配多种安装场景；
- 支持断上电复位功能和机械按键复位功能。

## 技术参数

产品型号	KBS1
无线类型	Bluetooth 5.2 SIG Mesh
开关通道	单通道
工作电压	100-240V~,50/60Hz, μ
继电器最大负载参数	阻性负载：1000W@230Vac 500W@110Vac 容性负载：400W@230Vac 200W@110Vac
继电器抗浪涌电流	70A@10ms
工作温度	-25°C~50°C
产品尺寸	L45×W45.5×H20.5(mm)
产品重量	30g
执行标准	UL8750、EN 61347-2-13:2014+A1:2017、EN 61347-1:2015+A1:2021、 EN 62493:2015/A1:2022



Bluetooth®

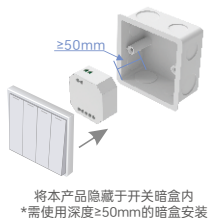
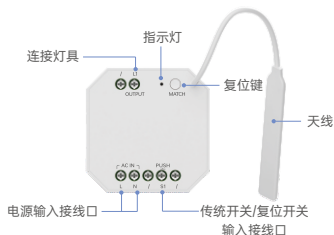


RoHS

SRRC

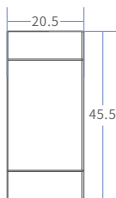
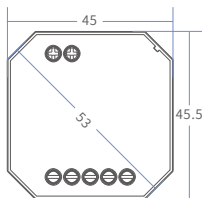


# 产品图示



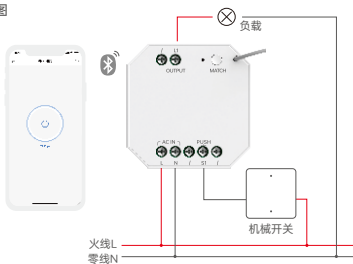
# 产品尺寸

单位: mm

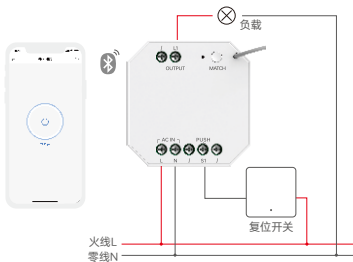


# 接线应用

## 1.机械开关接线图



## 2.复位开关接线图



# 应用组合

1.无线控制灯具。



2.通过APP设置遥控关联开关模组后，可实现APP与遥控两种控制方式控制设备。



3.支持本地场景，去网关，断网可控。



4.搭配智能网关，实现可视化控制，云场景、云自动化、本地自动化联动。



5. ...智能控制，更多应用搭配等您来设置。

# APP操作说明

## 1.账号注册

通过手机扫描下方二维码，按提示完成APP安装。然后打开APP进行登录/注册操作。



扫码下载APP  
IOS/Android



## 2. 配对操作

新用户在上创建家庭后，在【房间】界面点击右上角“+”进行添加，在添加设备列表中选择“智能模块”后，按照界面提示完成添加即可。



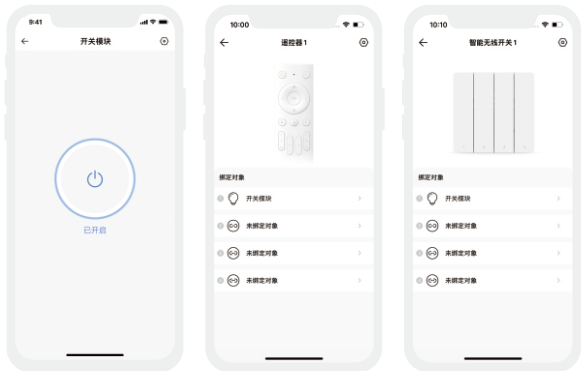
### 3. 通断电场景设置

在设置页面可以设置设备通电或断电时所执行的场景与场景执行时间；



## 4. 绑定界面设置

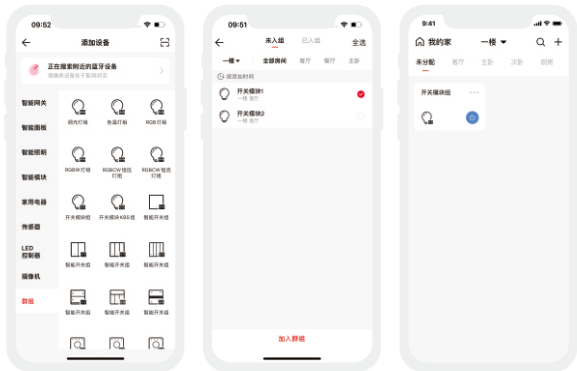
配对完成后，进入智能遥控器/智能无线开关绑定对象界面，选择开关模块设备进行关联后，可通过智能遥控器/智能无线开关控制设备开关，同时也可以在该界面解除绑定设备。





## 5. 群组控制

支持同类型的开关模块或者双路继电器KBS中的单路开关组成群组，用户可以对群组进行控制通断电等操作，操作更加便利。进入添加设备列表，选择“群组-开关模块组”，按照提示修改群组名称后，点击“下一步”勾选您要组成群组的设备，保存即可。



## 6. 本地场景

切换到【智能】界面， 点击右上角“+”创建本地场景，设置执行动作后，即可实现蓝牙设备的本地联动。



## 7. 云场景与自动化

确保家庭内已添加智能网关，如超级面板12S

**云场景：**切换到【智能】界面，点击“+”创建云场景。设置执行动作后，即可实现远程联动。

**自动化：**在【智能】界面中选择“自动化”，点击“+”创建自动化。可选择本地/云端执行方式，以及设置触发条件及执行动作。当满足已设置的触发条件时，自动触发一系列设备动作，实现远程联动。



## 8. 恢复出厂设置

**机械复位:** 确保设备连接灯具并常亮, 长按复位键15秒至指示灯红色快闪后松开, 3秒内再短按复位键3次, 红色指示灯慢闪表示恢复出厂设置, 蓝色快闪表示设置完成。

**断上电复位:** 在断电的情况下, 使用开关让设备通电15秒后断电2秒, 再连续通断电6次 (每次通电2秒, 断电5秒), 第7次通电后, 负载灯具闪烁3次, 即表示已恢复到出厂设置状态。

**APP复位:** 点击开关模块的“...”进入主界面, 再点击右上角“⊙”进入设置界面, 点击“删除设备”即可。



## 常见问题

设备一直搜索不到怎么办？

请检查以下选项：

- 确保设备正常通电状态；
- 确保手机与设备两者尽量靠近，建议不超过15米；
- 确保设备未被添加过，如被添加过，请手动恢复出厂设置。

## 注意事项

- 请由具有专业资格的人员进行调试安装；
- 我司产品（专有型号除外）不能防水防雷，需避免日晒雨淋，如安装在户外，请用防水箱和防雷装置；
- 良好的散热条件会延长产品的使用寿命，请把产品安装在通风良好的环境；
- 请检查使用的工作电压是否符合产品的参数要求；
- 通电调试前，应确保所有接线正确，以避免因接线错误而导致灯具损坏；
- 请检查使用的工作电压是否符合产品的参数要求；
- 如果发生故障，请勿私自维修；如有疑问，请联系供应商。

\* 本说明书的内容如有变更，恕不另行通知。若内容与您使用的功能有所不同，则以实物为准。  
如有疑问，欢迎向我司授权的经销商咨询。

## 保修条例

- 自出厂之日起保修服务期为5年。
- 在保修服务期内出现产品质量问题我司将给予免费修理或更换服务。

非保修条例：

属下列情况不在免费保修或更换服务范围之内：

- 已经超出保修期限的；
- 过高电压、超负载、操作不当等人为造成的损坏；
- 产品外形严重损坏或变形；
- 自然灾害以及人力不可抗拒原因造成的损坏；
- 产品保修标签和产品唯一条形码损坏；
- 无我司签订的合同或发票凭证。

1. 修理或更换是我司对客户的最唯一补救措施。我司不承担任何附带引起的损害赔偿责任，除非在适用法律范围之内。

2. 我司享有修正或调整本保修条款的权利，并以书面形式发布为准。